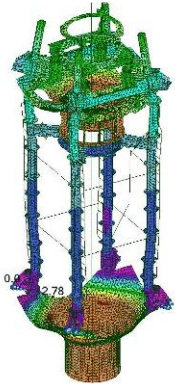
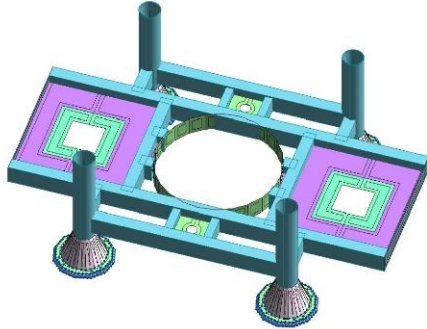


BOP Frame Assessment:

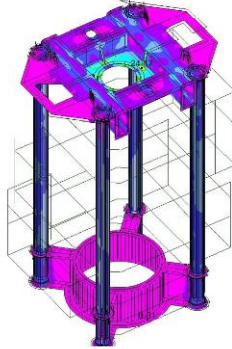
JOB 2112
M G Hulme
BOP Frame Strengthening
(Avoid Load By Pass)



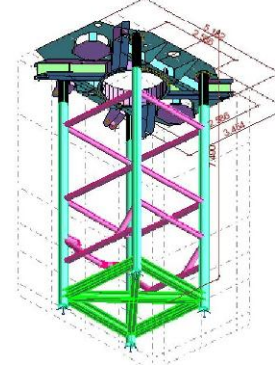
JOB 2154
Transocean Legend
BOP Frame Verification
(Avoid Load By Pass)



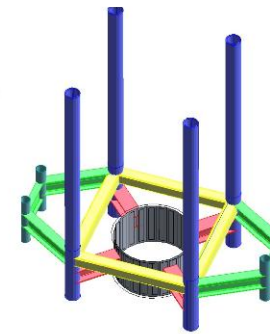
JOB 2197
Polar Pioneer
New LMRP and Strength Verification
(BOP Frame Recertification)



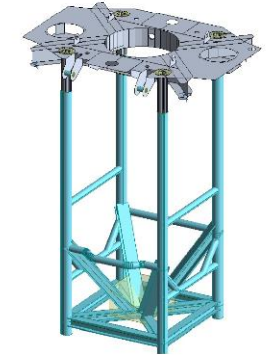
JOB 2552
Paul B. Loyd Junior
BOP Frame Strength Verification
(Modification to Receiver Plate)



JOB 2487
Sedco 711
BOP Support Frame
(Well Head Bucket Verification)

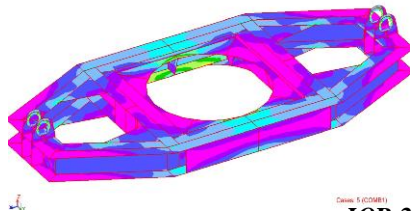


JOB 2785
Paul B. Loyd Junior
BOP Guide Frame Strength Verification
(Global Strength Check)

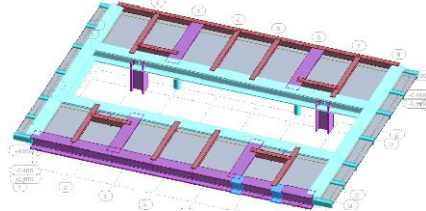


BOP Handling:

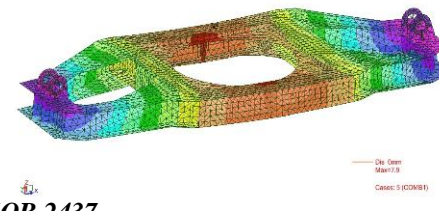
JOB 2035
NOV BOP Lifting Ring
(Transporting Annular to Rig)



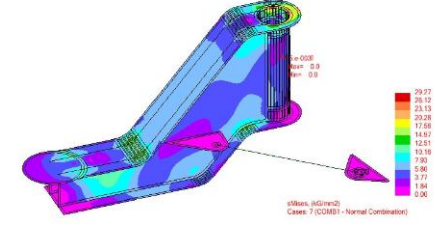
JOB 2828
Marianas MPD Support System
(Over BOP Carrier)



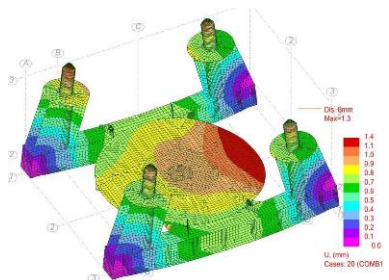
JOB 2107
NOV BOP Lifting Ring
(Improve Lift.)



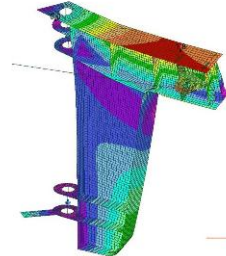
JOB 2329
Transocean Winner
Angel Wings Upgrade
(In step With BOP Weight)



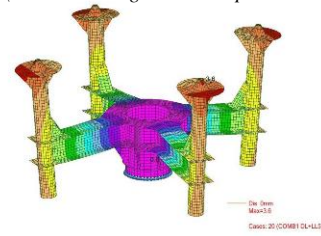
JOB 2349
Nexen Tree Handling Skid Frame



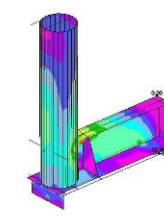
JOB 2349
Angel Wing in Operation
With Tree Trolley (Fork Down)



JOB 2437
Jim Cunningham
BOP Support Frame for Wellhead Gasket Inspection
(Avoid Working Under Suspended Load)



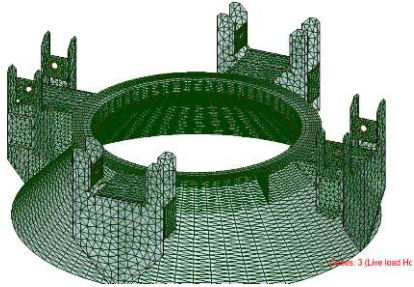
JOB 2627
Rather IWOCs UTA Hang off
Posts on BOP Transporter
(Pay Load Determination)



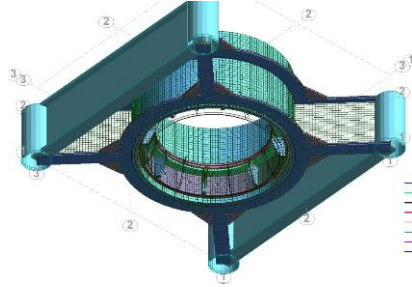
Key word: Rig Engineering, BOP frame assessment, BOP component assessment, BOP handling, BOP accessories, BOP control system, Supplementary services, Subsea engineering case study summary.

BOP Component Assessment:

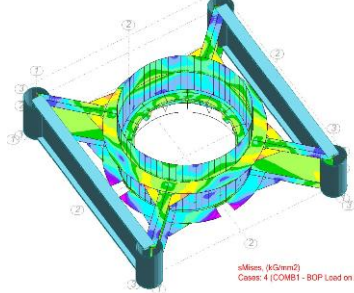
JOB 1953
Sedco 711
Re Entry Guide Cone
(Quick Connect Funnel)



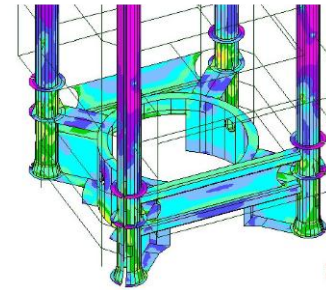
JOB 2507
Rather
BOP Wellhead Connector Change out
(Tree Intervention)



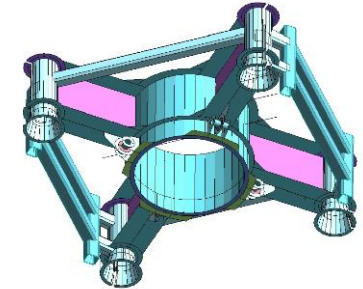
JOB 2528
Rather BOP Modifications
Lower Guide Frame
(Tree Intervention)



JOB 2601
Polar Pioneer
BOP Lower Frame Modification
(Tree Intervention)

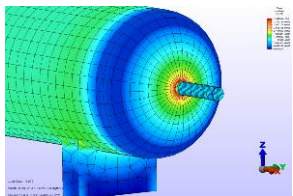


JOB 2615
Polar Pioneer
New Wellhead Spider
(Drop Down System)

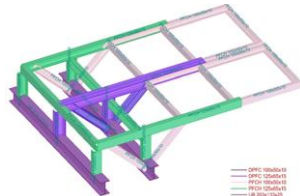


BOP Accessories:

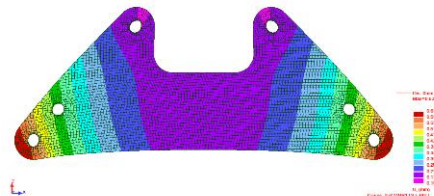
JOB 2726
AKHER H3
APV System Verification
(Fitness for Purpose)



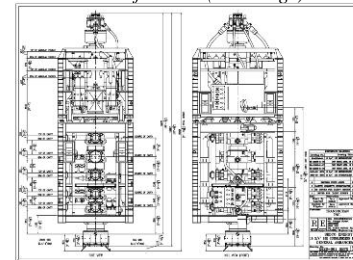
JOB 1919
Prospect BOP
Maintenance Platform
(Over Moon Pool Access.)



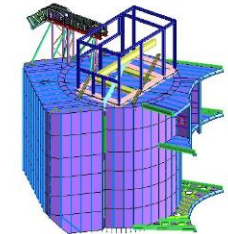
JOB 2832
Discoverer Spirit
Drill Line Spreader Bar
(Heavy Lift System)



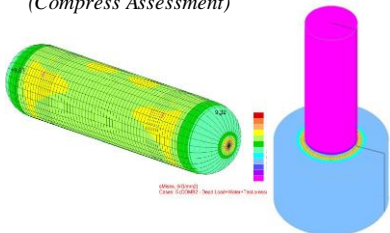
JOB 2820
Sedco Energy
BOP Modification (Drawings)



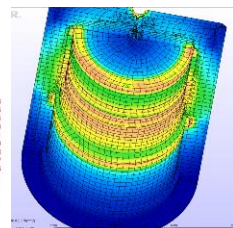
JOB 2632
Sedco 711 Series
Subsea Hose Deployment System Verification
(Flow Line to Tanker)



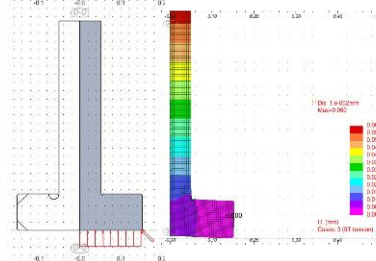
JOB 2377
AKHER H3
ASME VIII Verification
(Compress Assessment)



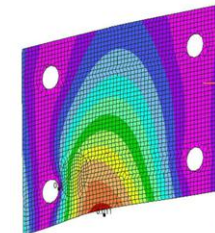
JOB 2399
Magellan
BOP Test Tool



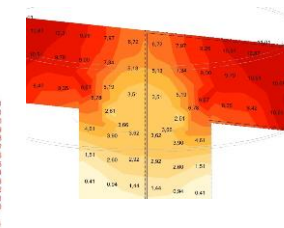
JOB 2755
Energy Riser C&K line test cap
(Hydro Test)



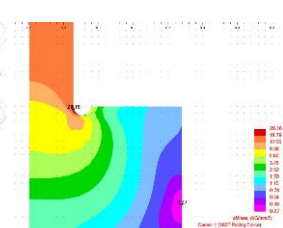
JOB 2456
Monarch
BOP Test Mandrel



JOB 2544
AFS BOP Bonnet
Test Plate



JOB 1837
Sedco 711
BOP Test Tools

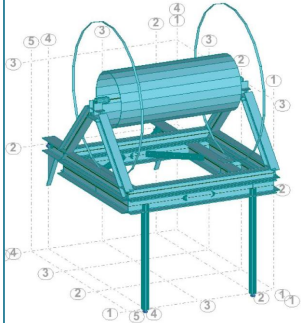


JOB 2698 / 2718
Magellan/ Sedco Express BOP
(Lifting Test Tools)

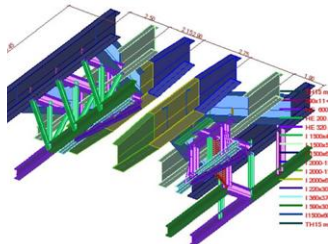
Key word: Rig Engineering, BOP frame assessment, BOP component assessment, BOP handling, BOP accessories, BOP control system, Supplementary services, Subsea engineering case study summary.

BOP Control System:

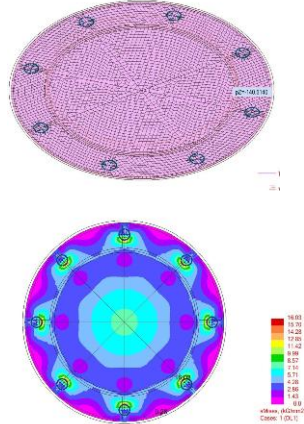
JOB 2230
Rather / Richardson
Pod Hose Upgrade
(Deepwater Upgrade)



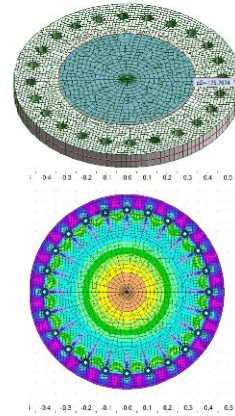
JOB 2542
Paul B. Loyd Junior
Pod Hose Reel Swing System
(Swivel System for Banana Sheave)



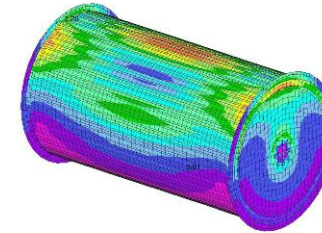
JOB 2420
Sedneth 701
Hydro Test Blanking Plate for Diverter
(Field Application)



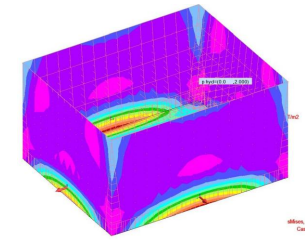
JOB 2523
Sedneth 701
Hydro Test Blanking Plate for Upper Ball Joint
(Field Application)



JOB 2457
Jim Cunningham
Pod Hose Reels Upgrade and Strengthening
(Deepwater Upgrade)



JOB 2810
RIG 135
Stripping Tank System

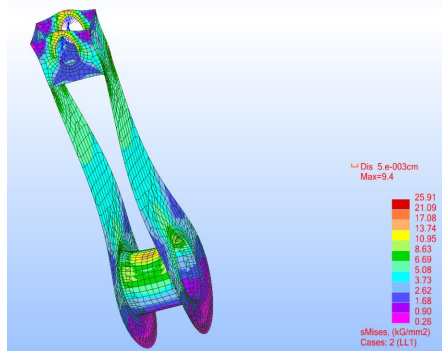


Supplementary Services:

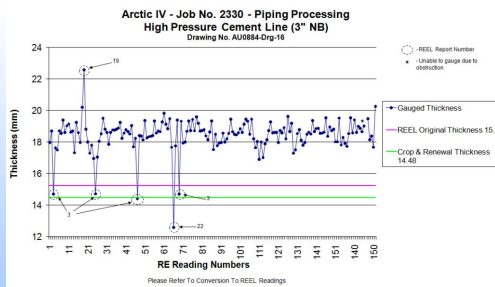
JOB 2160
Monarch
Mouse Hole Upgrade
(Heavier Tubular)



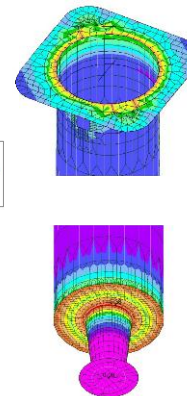
JOB 2829
Prospect MRT Sheave
(Riser Tensioner Turn Down Sheaves)



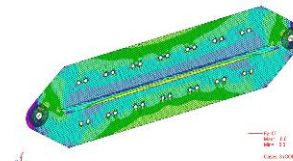
JOB 2330
Pressure Well Control Piping System
Verification
(Global Condition & Recommendation)



JOB 2485
Prospect
Mouse Hole Upgrade
(Heavier Tubular)



JOB 2502
Sedco 714
Sandline Clamp
(Block Hang off)



JOB 2720
Sedneth 701
New Flare Boom System
(Flaring off New Design)

